

Issues Surrounding Carbon Offset Projects in NC Forests

Christopher Galik

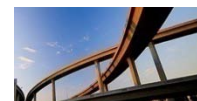
Forest Carbon Project Workshop

Raleigh, NC

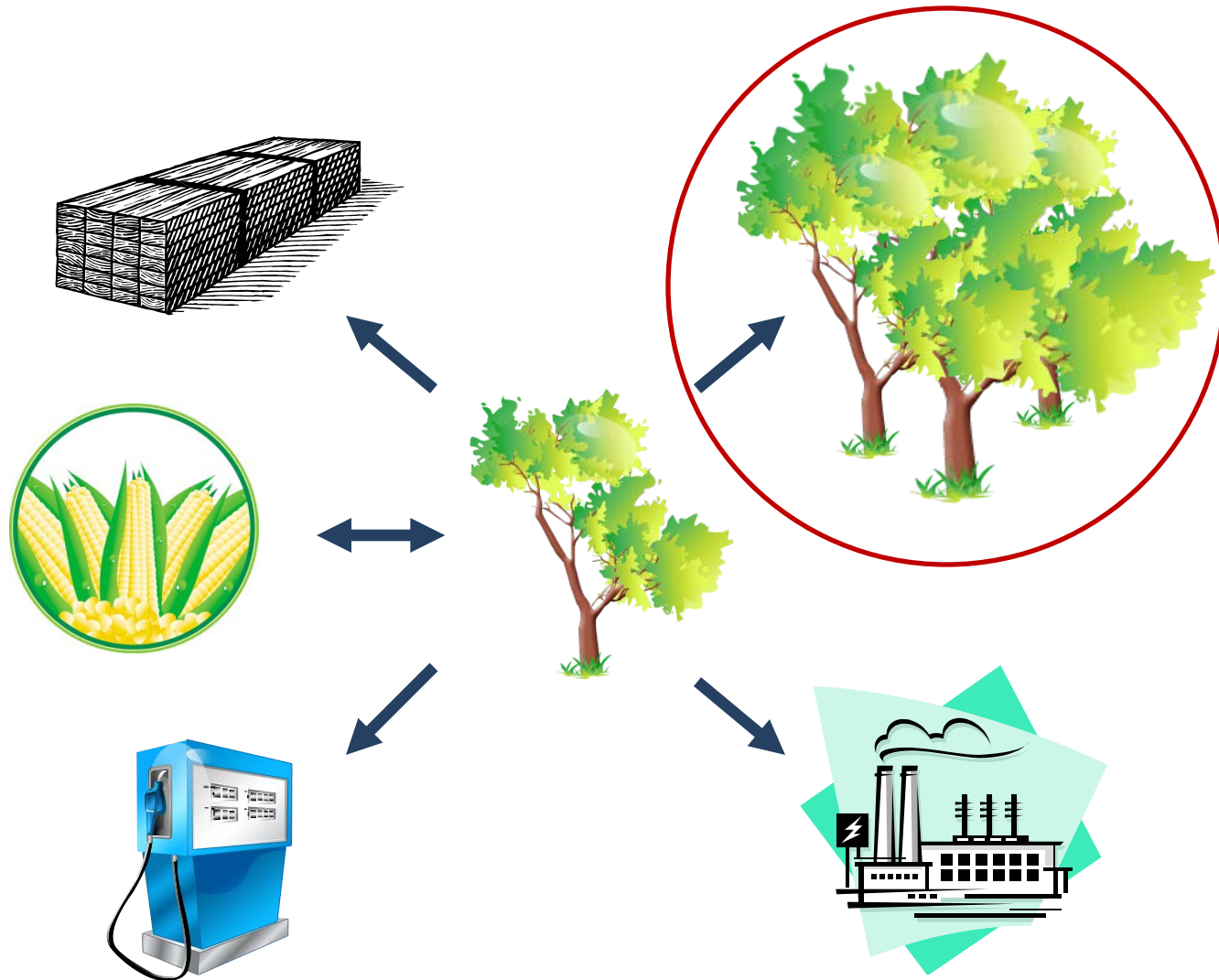
May 21, 2010

Climate Change Policy Partnership

Duke University

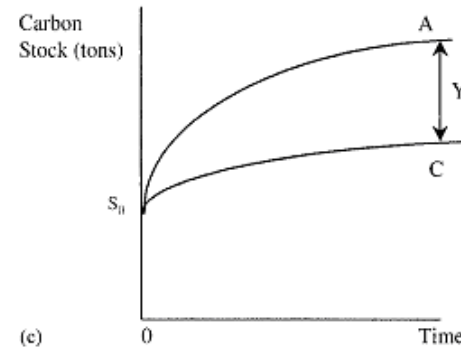
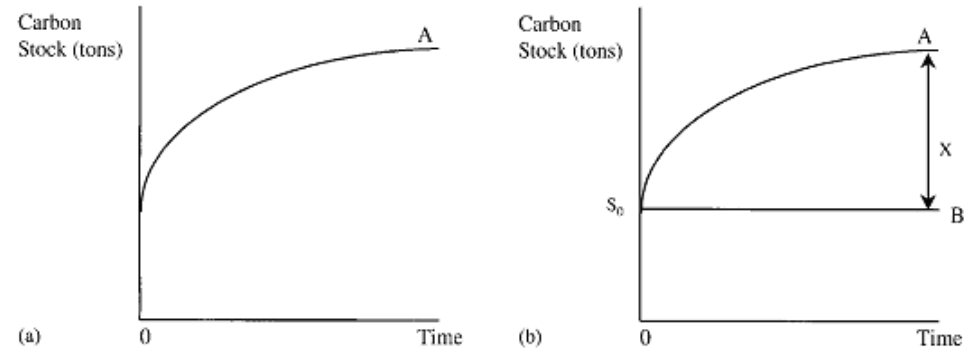


Offsets in context – interactions



Offset accounting issues

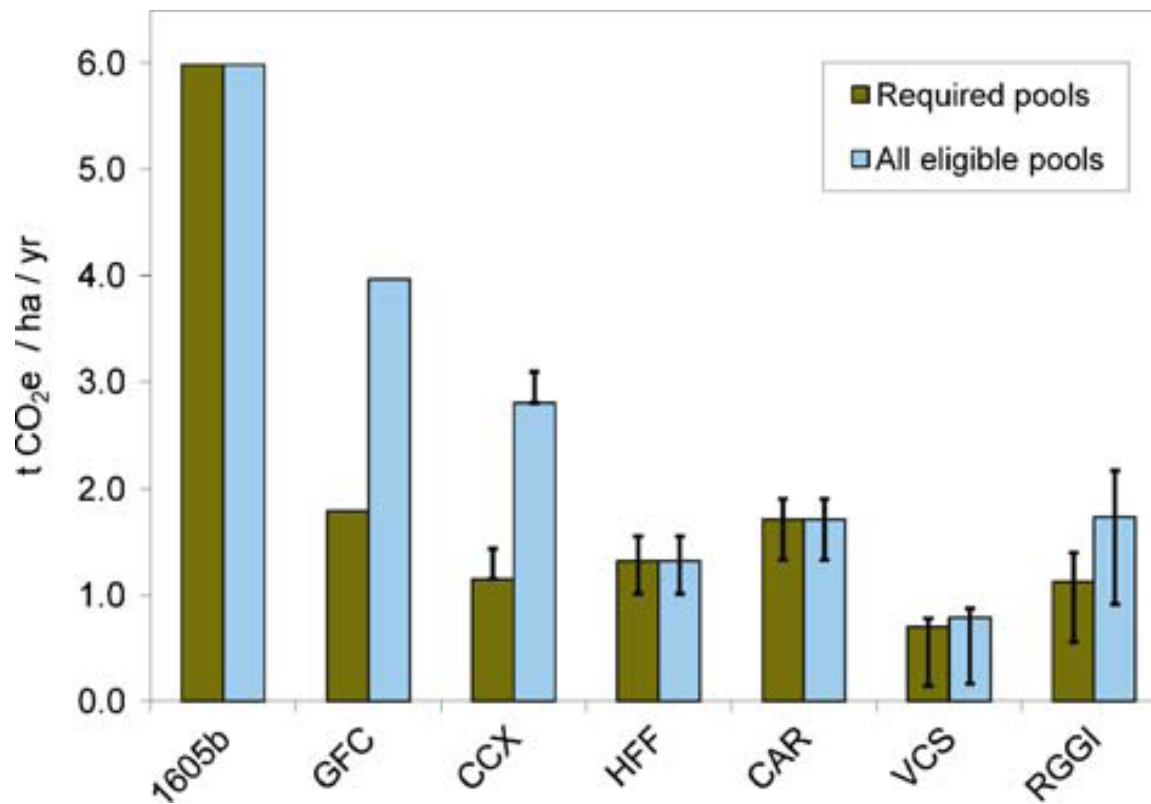
- Carbon Pools
- Baseline
- Additionality
- Permanence
- Leakage
- Uncertainty



Source: Richards and Andersson 2001



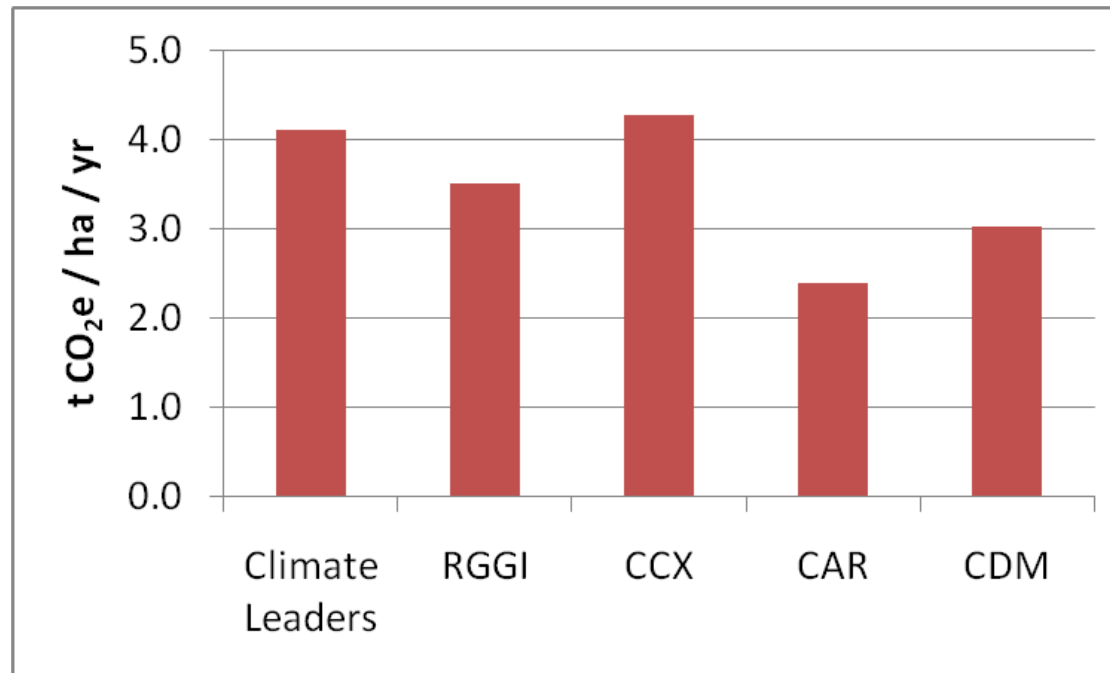
Cumulative creditable carbon: Forest management



Source: Galik et al. 2009b



Cumulative creditable carbon: Afforestation

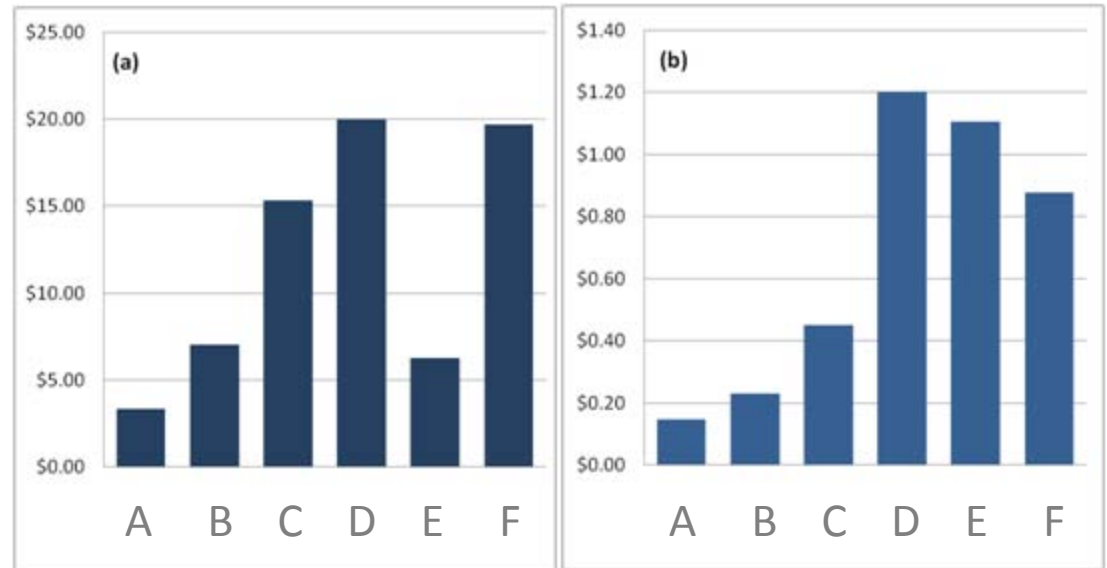


Source: Lazarus et al., 2009



Importance of transaction costs

- Implementation can be expensive, and can be influenced by:
 - protocol-specific requirements;
 - project size;
 - project configuration



Mean per-hectare transaction costs (\$/ha) for (a) 100 hectare and (b) 10,000 hectare projects, each a 25 to 50 rotation extension at the Calhoun Experimental Forest including all carbon pools.



Concluding thoughts

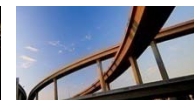
- Multiple factors and interactions will influence the economics of forest offsets;
- Accounting matters.



Thank you...

christopher.galik@duke.edu; 919.681.7193

www.nicholas.duke.edu/ccpp/



Selected References...

Galik, C.S., D.deB. Richter, M.L. Mobley, L.P. Olander, and B.C. Murray. (2008). A Critical Comparison and Simulated “Field Test” of Forest Management Carbon Offset Protocols. Climate Change Policy Partnership, Duke University, Durham, NC. 46p.

Galik, C.S., J.S. Baker, and J.L Grinnell. (2009a). Transaction costs and forest management carbon offset potential. Climate Change Policy Partnership, Duke University. Durham, NC.

Galik, C.S., M.L. Mobley, and D.deB. Richter. (2009b). A virtual “field test” of forest management carbon offset protocols: the influence of accounting. *Mitigation and Adaptation Strategies for Global Change* 14: 677–690

Lazarus, M., C. Lee, G. Smith, K. Todd, and M. Weitz. (2009). Road-testing of Selected Offset Protocols and Standards; A Comparison of Offset Protocols: Landfills, Manure, and Afforestation/Reforestation. SEI Working Paper US09-04. Stockholm Environment Institute, Somerville, MA. 69p.

U.S. Environmental Protection Agency. (2005). Greenhouse Gas Mitigation Potential in U.S. Forestry and Agriculture. Office of Atmospheric Programs. Washington, D.C.

